

MPFC-S



PCT

Professional Coating
Technologies, Inc.

PRODUCT: PIPE & FITTING COATING
CODE: MPFC-S

WE PROTECT YOUR WATER

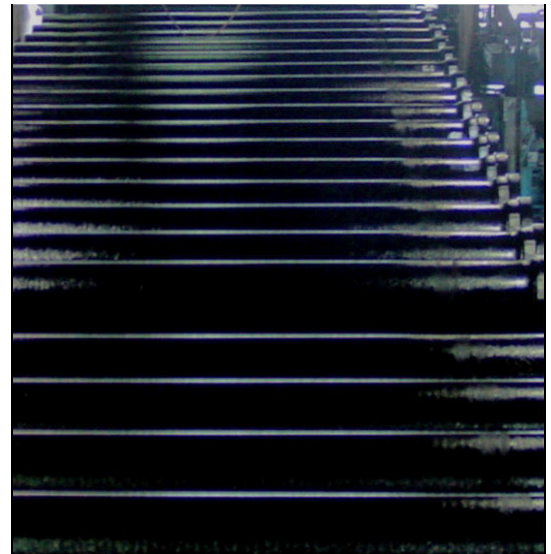
PRODUCT DESCRIPTION

MPFC-S Protective Coating provides superior rust and corrosion protection with improved abrasion and adhesion for your ductile, cast or steel products. MPFC-S is a low VOC, water borne, finish or primer coating that is user and environmentally friendly.

Tested in the salt spray chamber as per ASTM B117
Results were evaluated as per ASTM D1654

ADVANTAGES

- Does not stop up spray tips
- Flows through filters
- NSF/UL Tested
- Improved air quality and health
- Eliminates VOC related penalties
- Helps Your Plant meet current environmental regulations
- No hazardous air pollutants
- No known SARA 3 health hazard ingredients
- Superior adhesion to ID cement
- Bulk tank and pump stable



BENEFITS

- High Impact Resistance
- Less Dripping Easy Application
- Low VOC
- No Lifting or Blistering in the ID of the pipe
- Will Adhere to damp surfaces
- Superior corrosion resistance
- Tested in accordance to ASTM B117 salt spray test
- Non tacky finish
- Fast dry times 15 min.

GENERAL SURFACE PREPARATION

MPFC-S4 may be applied to a variety of surfaces without extensive cleaning. The surface should be as free as possible of oil, grease, dirt, and other foreign substances. The coating may be applied to damp surfaces however, faster dry times and thicker coverage will result on dry surfaces. On heavily rusted surfaces a second coat may be necessary.

Surface Temperature – For best adhesion and dry times the surface to be coated should be between 60°-180°F (15°-80°C). If surface temperatures cannot be raised, increase the temperature of the coating until desired adhesion and dry times are achieved. Do not exceed 180° (80°C) in a spray application and 100°F (38°C) in a dip, brush or roller application.

Previously Painted Surfaces - MPFC-S4 may be applied over itself and most other coatings with only normal cleaning preparation.

DIRECTIONS FOR USE OVERVIEW

DIRECTIONS FOR USE

Preparation - Stir coating prior to use. Thinning is not required. However, if thinning is desired, add water (70°F - 21°C or above) below the surface so as to minimize foaming. Do not dilute below 50% solids. Clean all equipment including pumps, filters, and tanks with mineral spirits prior to use.

Application equipment - MPFC-S4 may be applied with an airless sprayer, pressure pot, dip process, roller, or brush.

Rate of coverage - MPFC-S4 provides best protection at a coverage thickness of 2.5 - 3 mils dry (5.5 – 7.5 mils wet). Depending on the porosity of the surface, coverage should be 320 sq. ft./gal. (8m/L).

Spray application - Follow equipment manufacturer's normal recommended spray practices. The use of smaller tips and multiple passes will reduce dry times. Coating may be heated with inline heater to aid in the drying process.

Dip application - Both the product to be dipped and the coating should be at least 60°F (15°C). Temperatures below 60°F will reduce coating performance. Product to be dipped should remain immersed for at least 12 seconds.

Brush and roller application - Take care not to agitate the coating with the roller or brush as this will cause bubbles in the coating. Immerse brush or roller in coating when not in use. Use bucket for dipping rather than roller pan.

Drying - MPFC-S4 will dry to touch within 15 minutes with air movement and fully cure in 24 hours under normal conditions. For faster drying times, apply forced air immediately after application. If spraying, add a inline heater and operate at 145°-180°F (63° - 80°C).

Clean up - Clean equipment with mineral spirits.

Finish coat - MPFC-S4 may be top coated after 24 hours with most finish coatings including enamel, alkyd, epoxy, and polyurethane. Avoid high solvent coatings.

PRECAUTIONS OVERVIEW

STORAGE

Protect from freezing - For maximum shelf life, maintain a storage temperature above 60°F (15°C). Cover when not in use. Do not return any used material back to the storage container. Store drums on pallets do not put directly on the ground. Keep away from high voltage electrical equipment. If storing for extended periods of time, periodic stirring every 30-45 days is recommended to prevent settling. MPFC-S4 is an environmentally friendly coating. As with all earth friendly coatings, normal precautions should be taken to minimize any risk associated with usage. Consult Material Safety Data Sheet prior to use. This product is for industrial use

SHIPPING

Freight classification - Class 55 water based paint

DOT Regulations - Non regulated

Flash point - N/A in an emulsion state tankers

Packaging - 55 gal (208 L) drums, 275 (1,041 L) totes, 5,200 (19,682 L)